

Beginning Improv Scale Syllabus

Bb version

January, 8 2015

Andy Kleindienst

Major Scales

1 Dmaj7 Gmaj7

5 Cmaj7 Fmaj7

9 Bbmaj7 Ebmaj7

13 Abmaj7 Dbmaj7

17 F#maj7 Bmaj7

21 Emaj7 Amaj7

Dominant Scales

25 D7 G7

29 C7 F7

33 Bb7 Eb7

B \flat version

B \flat version

37 **A \flat 7** **D \flat 7**

41 **F#7** **B7**

45 **E7** **A7**

Minor Scales

49 **Dm7** **G7**

53 **Cm7** **Fm7**

57 **Bbm7** **Ebm7**

61 **Abm7** **Dbm7**

65 **F#m7** **Bm7**

69 **Em7** **Am7**

Major Pentatonic Scales

73 **D⁶** **G⁶**

77 C⁶ F⁶

81 Bb⁶ Eb⁶

85 Ab⁶ C#⁶

89 F#⁶ B⁶

93 E⁶ A⁶

Minor Pentatonic Scales

97 Dm⁷ Gm⁷

101 Cm⁷ Fm⁷

105 Bbm⁷ Ebm⁷

109 Abm⁷ C#m⁷

B \flat version

113 F \sharp m⁷ Bm⁷

117 Em⁷ Am⁷

Major Bebop (Diminished 6th) Scales

121 Dmaj⁷

124 Gmaj⁷

127 Cmaj⁷

130 Fmaj⁷

133 B \flat maj⁷

136 E \flat maj⁷

139 A \flat maj⁷

142 C \sharp maj⁷

145 F \sharp maj7



148 Bmaj7



151 Emaj7



154 Amaj7



Dominant Bebop Scales

157 D 7



160 G 7



163 C 7



166 F 7



169 B \flat 7



172 E \flat 7



B \flat version

175 $A\flat^7$

Musical staff for measure 175, featuring the $A\flat^7$ chord. The staff contains a melodic line with eighth and quarter notes, including a flat sign over the final note.

178 $C\sharp^7$

Musical staff for measure 178, featuring the $C\sharp^7$ chord. The staff contains a melodic line with eighth and quarter notes.

181 $F\sharp^7$

Musical staff for measure 181, featuring the $F\sharp^7$ chord. The staff contains a melodic line with eighth and quarter notes.

184 B^7

Musical staff for measure 184, featuring the B^7 chord. The staff contains a melodic line with eighth and quarter notes.

187 E^7

Musical staff for measure 187, featuring the E^7 chord. The staff contains a melodic line with eighth and quarter notes.

190 A^7

Musical staff for measure 190, featuring the A^7 chord. The staff contains a melodic line with eighth and quarter notes.

Whole Tone Scales

193 D^7 G^7

Musical staff for measure 193, featuring D^7 and G^7 chords. The staff contains a melodic line with eighth and quarter notes.

197 C^7 F^7

Musical staff for measure 197, featuring C^7 and F^7 chords. The staff contains a melodic line with eighth and quarter notes.

201 $B\flat^7$ $E\flat^7$

Musical staff for measure 201, featuring $B\flat^7$ and $E\flat^7$ chords. The staff contains a melodic line with eighth and quarter notes.

205 $A\flat^7$ $C\sharp^7$

Musical staff for measure 205, featuring $A\flat^7$ and $C\sharp^7$ chords. The staff contains a melodic line with eighth and quarter notes.

209 F#+7 B+7

213 E+7 A+7

Half-Whole Diminished Scales

217 D13(#11)(b9)

220 G13(#11)(b9)

223 C13(#11)(b9)

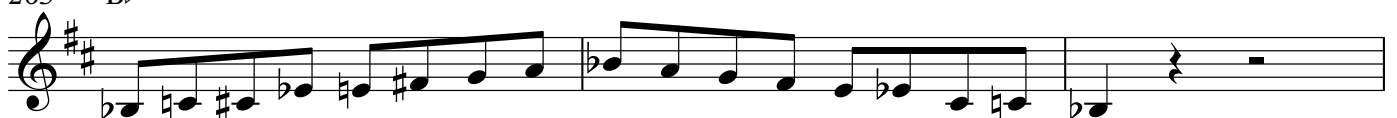
226 F13(#11)(b9)

229 Bb13(#11)(b9)

232 Eb13(#11)(b9)

235 Ab13(#11)(b9)

238 C#13(#11)(b9)

241 F \sharp 13(\sharp 11)₉244 B13(\sharp 11)₉247 E13(\sharp 11)₉250 A13(\sharp 11)₉**Whole-Half Diminished Scales**253 D $^{\circ 7}$ 256 G $^{\circ 7}$ 259 C $^{\circ 7}$ 262 F $^{\circ 7}$ 265 B \flat $^{\circ 7}$ 268 E \flat $^{\circ 7}$ 

Bb version

305 F#7alt. B7alt.

309 E7alt. A7alt.

Blues Scales

313 D7(#9) G7(#9)

317 C7(#9) F7(#9)

321 Bb7(#9) Eb7(#9)

325 Ab7(#9) C#7(#9)

329 F#7(#9) B7(#9)

333 E7(#9) A7(#9)

Modes of C Major

C Ionian

D Dorian

E Phrygian

F Lydian

337 Dmaj7

Em7

F#m7(b9)

Gmaj7(#11)

G Mixolydian

A Aeolian

B Locrian

341 A7

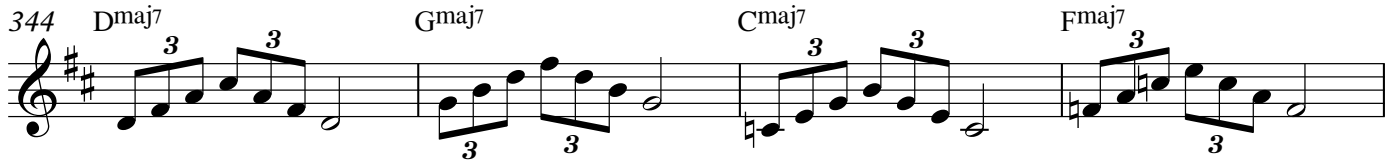
Bm7

C#o7

Arpeggios

B \flat version

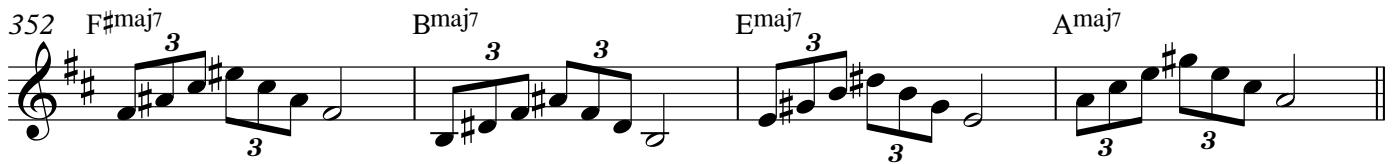
344 D maj^7 G maj^7 C maj^7 F maj^7



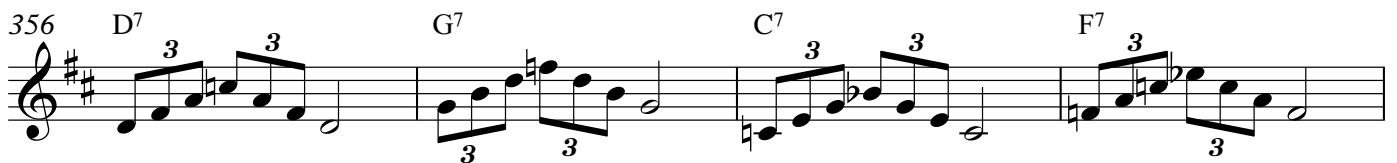
348 B $\flat\text{maj}^7$ E $\flat\text{maj}^7$ A $\flat\text{maj}^7$ C $\sharp\text{maj}^7$



352 F $\sharp\text{maj}^7$ B maj^7 E maj^7 A maj^7



356 D 7 G 7 C 7 F 7



360 B \flat^7 E \flat^7 A \flat^7 C \sharp^7



364 F \sharp^7 B 7 E 7 A 7



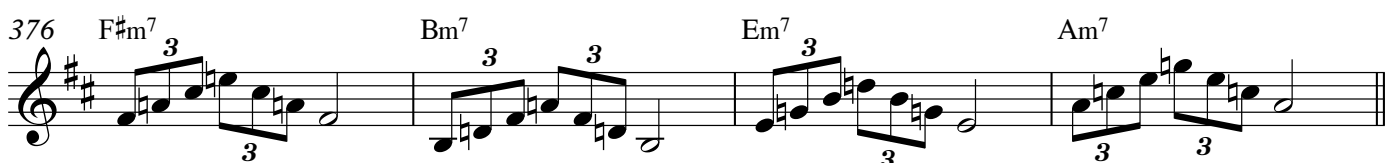
368 D m^7 G m^7 C m^7 F m^7



372 B $\flat\text{m}^7$ E $\flat\text{m}^7$ A $\flat\text{m}^7$ C $\sharp\text{m}^7$



376 F $\sharp\text{m}^7$ B m^7 E m^7 A m^7



380 D ø^7 G ø^7 C ø^7 F ø^7



B \flat version

384 B \flat ø7 Ebø7 Abø7 C#ø7

388 F#ø7 Bø7 Eø7 Aø7

392 Dø7 Gø7 Cø7 Fø7

396 B \flat ø7 Ebø7 Abø7 C#ø7

400 F#ø7 Bø7 Eø7 Aø7

404 Dmaj7(#5) Gmaj7(#5) Cmaj7(#5) Fmaj7(#5)

408 B \flat maj7(#5) Ebmaj7(#5) Abmaj7(#5) C#maj7(#5)

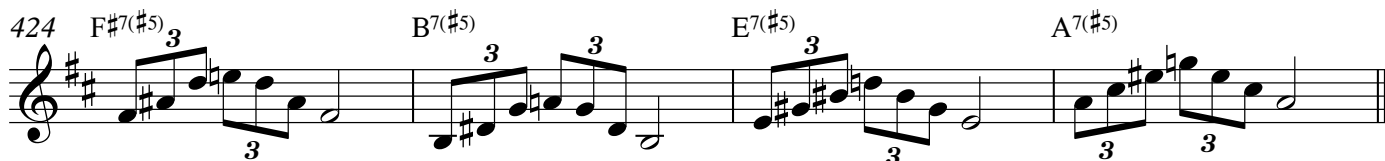
412 F#maj7(#5) Bmaj7(#5) Emaj7(#5) Amaj7(#5)

416 D7(#5) G7(#5) C7(#5) F7(#5)

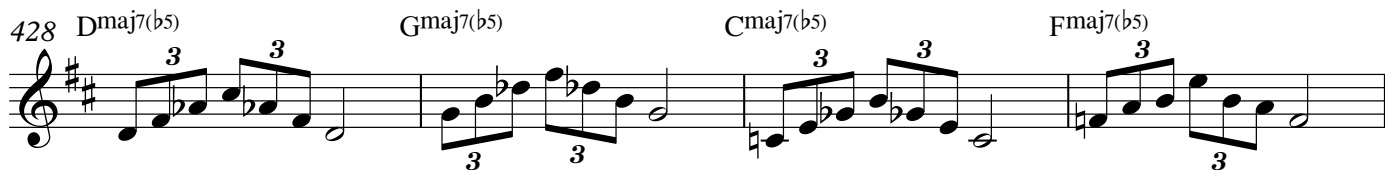
420 B \flat 7(#5) Eb7(#5) Ab7(#5) C#7(#5)

B \flat version

424 F \sharp 7(\sharp 5) B7(\sharp 5) E7(\sharp 5) A7(\sharp 5)



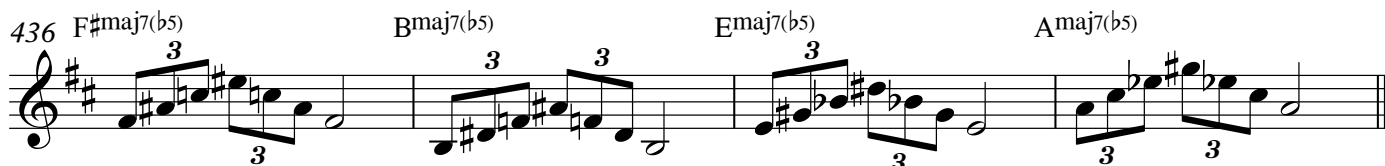
428 Dmaj7(\flat 5) Gmaj7(\flat 5) Cmaj7(\flat 5) Fmaj7(\flat 5)



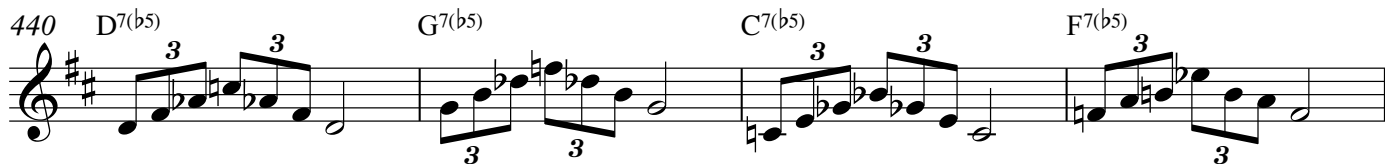
432 B \flat maj7(\flat 5) E \flat maj7(\flat 5) A \flat maj7(\flat 5) C \sharp maj7(\flat 5)



436 F \sharp maj7(\flat 5) Bmaj7(\flat 5) E \flat maj7(\flat 5) A \flat maj7(\flat 5)



440 D7(\flat 5) G7(\flat 5) C7(\flat 5) F7(\flat 5)



444 B \flat 7(\flat 5) E \flat 7(\flat 5) A \flat 7(\flat 5) C \sharp 7(\flat 5)



448 F \sharp 7(\flat 5) B7(\flat 5) E7(\flat 5) A7(\flat 5)

