

Bass Clef version Beginning Improv Scale Syllabus

January, 8 2015

Andy Kleindienst

Major Scales

1 Cmaj7 Fmaj7

5 Bbmaj7 Ebmaj7

9 Abmaj7 Dbmaj7

13 Gbmaj7 Bmaj7

17 Emaj7 Amaj7

21 Dmaj7 Gmaj7

Dominant Scales

25 C7 F7

29 Bb7 Eb7

33 Ab7 Db7

Bass Clef version

Bass Clef version

37 G^b7 B⁷

41 E⁷ A⁷

45 D⁷ G⁷

Minor Scales

49 C^m7 F⁷

53 B^bm⁷ E^bm⁷

57 A^bm⁷ D^bm⁷

61 G^bm⁷ B^m7

65 E^m7 A^m7

69 D^m7 G^m7

Major Pentatonic Scales

73 C⁶ F⁶

Bass Clef version

77 B \flat 6 Eb6



81 A \flat 6 Db6



85 G \flat 6 B6



89 E6 A6




93 D6 G6



Minor Pentatonic Scales

97 Cm7 Fm7



101 Bbm7 Ebm7



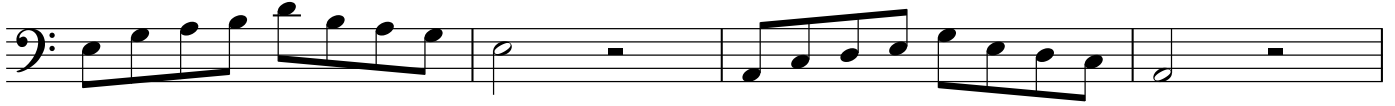
105 Abm7 Dbm7



109 Gbm7 Bm7



Bass Clef version

113 Em⁷Am⁷117 Dm⁷Gm⁷

Major Bebop (Diminished 6th) Scales

121 Cmaj⁷124 Fmaj⁷127 Bbmaj⁷130 Ebmaj⁷133 Abmaj⁷136 Dbmaj⁷139 Gbmaj⁷142 Bmaj⁷

145 E^maj7



148 A^maj7



151 D^maj7



154 G^maj7



Dominant Bebop Scales

157 C⁷



160 F⁷



163 B^b7



166 E^b7



169 A^b7



172 D^b7



Bass Clef version

175 G^{b7}

178 B⁷

181 E⁷

184 A⁷

187 D⁷

190 G⁷

Whole Tone Scales

193 C⁺⁷ F⁺⁷

197 B^{b+7} E^{b+7}

201 A^{b+7} D^{b+7}

205 G^{b+7} B⁺⁷

209 E⁺7

A⁺7



213 D⁺7

G⁺7



Half-Whole Diminished Scales

217 C¹³([#]11)_(b9)



220 F¹³([#]11)_(b9)



B^b13([#]11)_(b9)

223



E^b13([#]11)_(b9)

226



A^b13([#]11)_(b9)

229



D^b13([#]11)_(b9)

G^b13([#]11)_(b9)

B¹³([#]11)_(b9)

E¹³([#]11)_(b9)

232



Bass Clef version

244 A¹³(_b9^{#11})

D¹³(_b9^{#11})

Musical notation for exercise 244, bass clef, A¹³(_b9^{#11}) and D¹³(_b9^{#11}) chords.

248

G¹³(_b9^{#11})

Musical notation for exercise 248, bass clef, G¹³(_b9^{#11}) chord.

Whole-Half Diminished Scales

253 C^{o7}

Musical notation for exercise 253, bass clef, C^{o7} chord.

256 F^{o7}

Musical notation for exercise 256, bass clef, F^{o7} chord.

259 B^bo⁷

Musical notation for exercise 259, bass clef, B^bo⁷ chord.

262 E^bo⁷

Musical notation for exercise 262, bass clef, E^bo⁷ chord.

265 A^bo⁷

Musical notation for exercise 265, bass clef, A^bo⁷ chord.

268 D^bo⁷

Musical notation for exercise 268, bass clef, D^bo⁷ chord.

271 G^bo⁷

Musical notation for exercise 271, bass clef, G^bo⁷ chord.

274 B^{o7}

Musical notation for exercise 274, bass clef, B^{o7} chord.

277 E^{o7}



280 A^{o7}



283 D^{o7}



286 G^{o7}



Altered Scales

289 C^{7alt.}

F^{7alt.}



293 Bb^{7alt.}

Eb^{7alt.}



297 Ab^{7alt.}

Db^{7alt.}



301 Gb^{7alt.}

B^{7alt.}



305 E^{7alt.}

A^{7alt.}



309 D^{7alt.}

G^{7alt.}



10 Blues Scales

Bass Clef version

313 C7(#9)

F7(#9)

Musical notation for C7(#9) and F7(#9) blues scales in bass clef. The first scale (C7(#9)) starts on C2 and the second (F7(#9)) starts on F2. Both are in 12/8 time and consist of eighth notes.

317 Bb7(#9)

Eb7(#9)

Musical notation for Bb7(#9) and Eb7(#9) blues scales in bass clef. The first scale (Bb7(#9)) starts on Bb2 and the second (Eb7(#9)) starts on Eb2. Both are in 12/8 time and consist of eighth notes.

321 Ab7(#9)

Db7(#9)

Musical notation for Ab7(#9) and Db7(#9) blues scales in bass clef. The first scale (Ab7(#9)) starts on Ab2 and the second (Db7(#9)) starts on Db2. Both are in 12/8 time and consist of eighth notes.

325 Gb7(#9)

B7(#9)

Musical notation for Gb7(#9) and B7(#9) blues scales in bass clef. The first scale (Gb7(#9)) starts on Gb2 and the second (B7(#9)) starts on B2. Both are in 12/8 time and consist of eighth notes.

329 E7(#9)

A7(#9)

Musical notation for E7(#9) and A7(#9) blues scales in bass clef. The first scale (E7(#9)) starts on E2 and the second (A7(#9)) starts on A2. Both are in 12/8 time and consist of eighth notes.

333 D7(#9)

G7(#9)

Musical notation for D7(#9) and G7(#9) blues scales in bass clef. The first scale (D7(#9)) starts on D2 and the second (G7(#9)) starts on G2. Both are in 12/8 time and consist of eighth notes.

Modes of C Major

C Ionian

D Dorian

E Phrygian

F Lydian

337 Cmaj7

Dm7

Em7(b9)

Fmaj7(#11)

Musical notation for modes of C major: Cmaj7, Dm7, Em7(b9), and Fmaj7(#11). The scales are in bass clef and consist of eighth notes.

G Mixolydian

A Aeolian

B Locrian

341 G7

Am7

Bø7

Musical notation for modes of C major: G7, Am7, and Bø7. The scales are in bass clef and consist of eighth notes.

Arpeggios

Bass Clef version

344 Cmaj7 Fmaj7 Bbmaj7 Ebmaj7



348 Abmaj7 Dbmaj7 Gbmaj7 Bmaj7



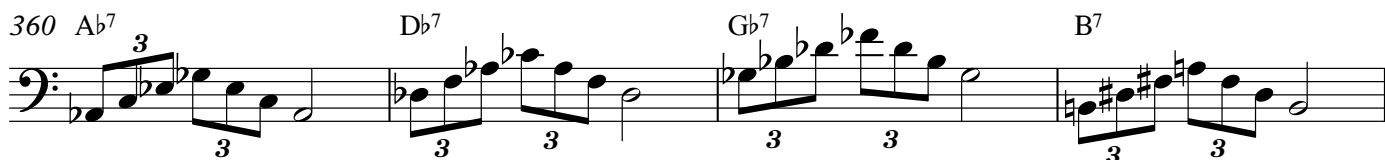
352 Emaj7 Amaj7 Dmaj7 Gmaj7



356 C7 F7 Bb7 Eb7



360 Ab7 Db7 Gb7 B7



364 E7 A7 D7 G7



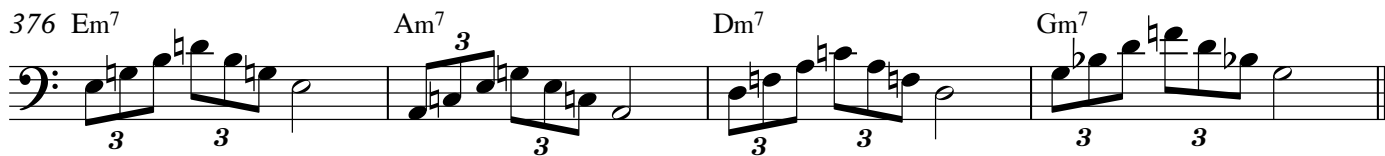
368 Cm7 Fm7 Bbm7 Ebm7



372 Abm7 Dbm7 Gbm7 Bm7



376 Em7 Am7 Dm7 Gm7



380 Cø7 Fø7 Bbø7 Ebø7



Bass Clef version

384 $A\flat^{\circ 7}$ $D\flat^{\circ 7}$ $G\flat^{\circ 7}$ $B^{\circ 7}$

388 $E^{\circ 7}$ $A^{\circ 7}$ $D^{\circ 7}$ $G^{\circ 7}$

392 $C^{\circ 7}$ $F^{\circ 7}$ $B\flat^{\circ 7}$ $E\flat^{\circ 7}$

396 $A\flat^{\circ 7}$ $D\flat^{\circ 7}$ $G\flat^{\circ 7}$ $B^{\circ 7}$

400 $E^{\circ 7}$ $A^{\circ 7}$ $D^{\circ 7}$ $G^{\circ 7}$

404 $C^{maj7(\#5)}$ $F^{maj7(\#5)}$ $B^{maj7(\#5)}$ $E\flat^{maj7(\#5)}$

408 $A\flat^{maj7(\#5)}$ $D\flat^{maj7(\#5)}$ $G\flat^{maj7(\#5)}$ $B^{maj7(\#5)}$

412 $E^{maj7(\#5)}$ $A^{maj7(\#5)}$ $D^{maj7(\#5)}$ $G^{maj7(\#5)}$

416 $C^7(\#5)$ $F^7(\#5)$ $B\flat^7(\#5)$ $E\flat^7(\#5)$

420 $A\flat^7(\#5)$ $D\flat^7(\#5)$ $G\flat^7(\#5)$ $B^7(\#5)$

Bass Clef version

424 E7(#5) A7(#5) D7(#5) G7(#5)

428 Cmaj7(b5) Fmaj7(b5) Bbmaj7(b5) Ebmaj7(b5)

432 Abmaj7(b5) Dbmaj7(b5) Gbmaj7(b5) Bmaj7(b5)

436 Emaj7(b5) Amaj7(b5) Dmaj7(b5) Gmaj7(b5)

440 C7(b5) F7(b5) Bb7(b5) Eb7(b5)

444 Ab7(b5) Db7(b5) Gb7(b5) B7(b5)

448 E7(b5) A7(b5) D7(b5) G7(b5)